

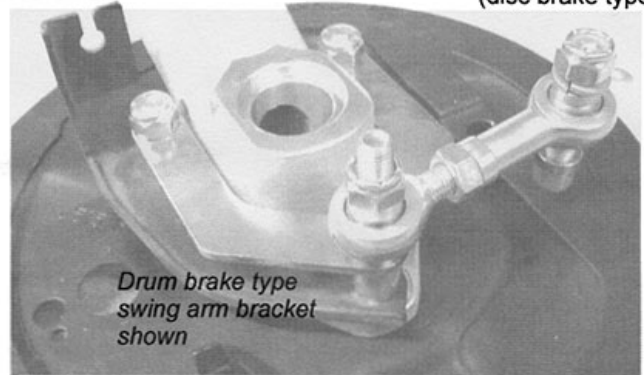
Fitting instructions for the blade type rear anti roll bar

Part numbers 1013207 (drum type) and 1013211 (disc brake type)

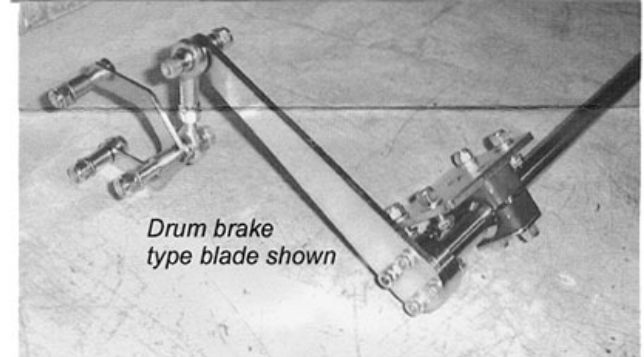
For drum and disc braked swing arms.

Preparation: The car should be raised on axle stands with the rear wheels and the tail section of the exhaust removed. The brake drums will need to be removed in order to mount the swing arm bracket and longer mounting bolts, two of the three spacers are slightly shorter to allow for the thickness of the handbrake cable bracket:

For disc brakes, the drop link bracket shown below is fitted in place of the swing arm bracket shown right. It will be necessary to remove the disc and hub for disc brake installation:



Drum brake type swing arm bracket shown



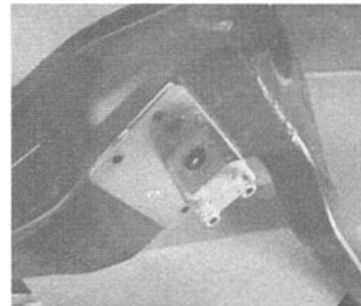
Drum brake type blade shown

With the swingarm mounting fitted to the arms, the roll bar should be assembled as shown in preparation for drilling the rear subframe for the reinforcing plate which holds the plastic bushes and roll bar:

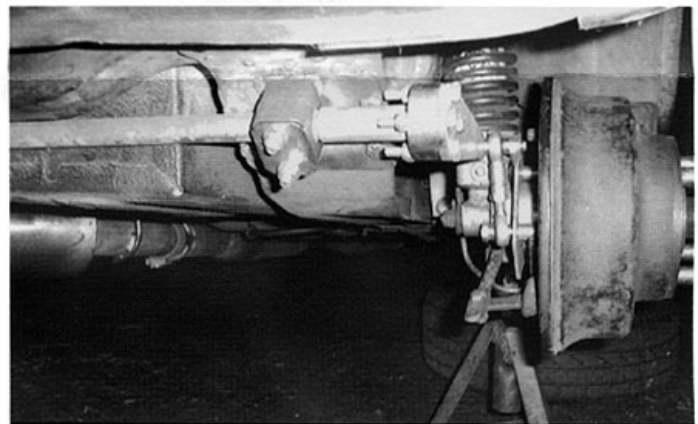
For disc braked cars, the edge of the rear subframe may need to be folded up approx 100mm either side of the drop link position to allow working clearance as the space available for the drop link and blade is limited

With the bar assembled as shown, the bar assembly can be swung up into position for drilling. The two reinforcing plates mount to the rear subframe in the positions as shown, spaced outwards as far as the bar will allow.

The blades for the disc brake version have an offset bent in, the drop link end of the blade should therefore be positioned facing inwards



The bar positions centrally in the space between the battery box and rear subframe cross member. The reinforcing plates can be then clamped in position and the mounting bolt holes drilled. N.B. The reinforcing plates are handed



Once all bolts have been checked for tightness, the drums, exhaust and wheels can be refitted and the car returned to level ground for the final adjustment.

Correctly adjusted, there should be no preload on the anti roll bar when the car sits on level ground, this can be achieved by adjusting the overall length of the two spherical rod ends which act as the drop links

